

**Two Comments
on Questions:**

||

D

ScienceForums

#GL13conf

Science-Forums.net
COMMUNITIES FOR SCIENCE COLLEAGUES



Lance Vowell
Program Manager
Contractor to DOE/OSTI
Information International
Associates (IIa)



Lynn Davis
Program Liaison, MLS
DOE Office of Scientific and
Technical Information (OSTI)

Motivation/Justification

Hypothesis that Web 2.0 technologies can promote:

- Collaboration
- Information exchange
- Global networking among scientists (peer-to-peer)
- Scientific discovery and innovation



BACKGROUND

Motivation/Justification (cont'd.)

We believed that scientific researchers would want to collaborate in a different manner than that provided by the typical social network such as Facebook, LinkedIn, Second Life or Twitter

We also wanted the system to support a broad range of both published and grey information types such as technical reports, theses, research notes, research papers in progress

BACKGROUND

Primary Goal

Speed the diffusion of scientific knowledge by enabling improved web 2.0 communications among scientific and research communities.

- Ease implementation of peer-to-peer communications
- Enable informal content creation of both comments and discussion
- Create formal published and grey literature
- Provide mechanisms to access, import, share, view, and cite other published and grey literature



PHASE I

Other Potential Benefits

- Facilitate retrieval of scientific and technical information by librarians and other information professionals
- Apply concept to traditional government research agencies, universities, pharmaceutical companies, and all organizations involved in scientific research



User/Subject Matter Expert Input Sought

- Interviewed hand-selected Focus Group
- Identified larger group to provide periodic feedback



PHASE I

Major Focus Areas

During 3 years of research:

- Determined high-level requirements for system
 - Simplicity and ease of use
 - Information security
- Conducted survey of commercial off-the-shelf/open source systems
- Produced prototype for evaluation

PHASE I

Prototype Development

- Noted considerable change in landscape of peer-to-peer collaboration between Phase I and Phase II surveys
- Determined significant number of shareware or open source products were highly customizable and would meet many of the project requirements out-of-the-box

Technology

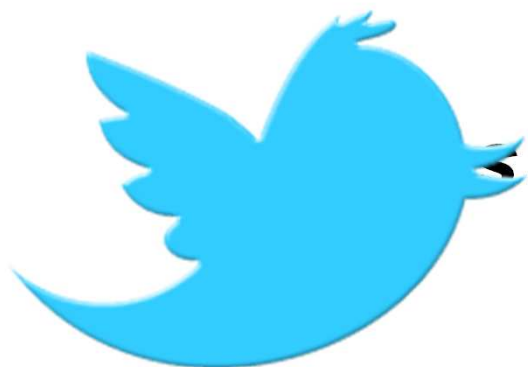
- **Platform as a Service (PaaS) and Image Driven**, to support **Research Teams** developed by **single** **Departmental/Institutional System** **the way** **to** **be** **self-** **repository** **(library)** **for** **researchers** **can** **research** **information** **web-based** **communities** **around** **scientific** **topics** **of** **interest** **to** **those** **groups**

Beta

- **“Science-Forums.net”**: The name given the website and system by the Project Team



Science-Forums.net



***Be sure to Tweet Comments
or Questions:***

@L_Vowell

@LynnJD

#GL13ScienceForums

#GL13conf

Home

Welcome / Dev News

About

The Idea/Project Plan

Forums

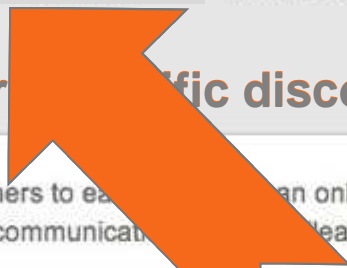
Invite

Include Colleagues

Support

FAQs/Contact Info

Welcome: Building forums for scientific discovery



Science-Forums.net enables scientists and researchers to easily create an online community around a specialized topic area to foster enhanced communication among colleagues.

1 Step 1
CREATE A PROFILE

2 Step 2
CREATE A FORUM

3 Step 3
INVITE COLLEAGUES

You'll get a simple screen to create a Login ID for accessing the system and starting your Profile. We'll email you a password, and you're ready to create a Profile. It's easy and takes seconds.

Step 1 complete! (Currently logged in)



Enabling scientists to share information about their work in a pre-publishing environment can prevent overlap and reveal opportunities for collaboration and problem solving. Removing organizational and geographical boundaries, members within each forum can leverage the research, reviews, and discoveries of others in the group.

How to Get Started



Announcements / Team Blog

Welcome to Science-Forums.net Beta Development site, dedicated to advancing science through sharing knowledge.

We are pleased to invite you to peruse the site, start a Forum on your topic of interest, and give us feedback.

Would you be interested in seeing a search of DOE Holdings in addition to being able to search one or all Forums?



Home

Welcome / Dev News

About

The Idea / Project Plan

Forums

Create / Learn More

Invite

Support

FAQs / Contact Info

Forums

Search for a forum by name

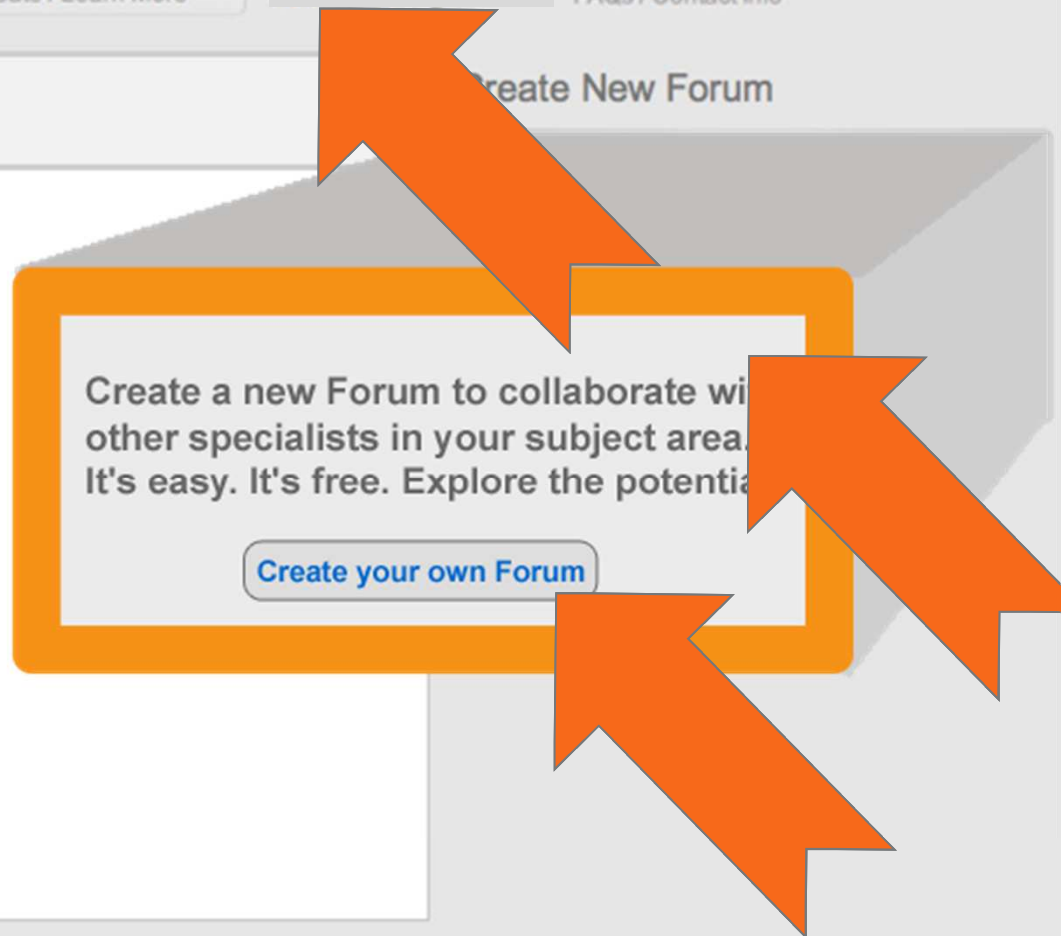
Filter by Subject Category

- ✓ <none>
- Agriculture & Food
- Applied Science & Technologies
- Astronomy & Space
- Biology & Nature
- Chemistry and Chemicals
- Computers, Communication & Mathematics
- Earth & Ocean Sciences
- Energy & Energy Conservation
- Environment & Environmental Quality
- Health & Medicine
- Natural Resources & Conservation
- Physics
- Science Education

Create New Forum

Create a new Forum to collaborate with other specialists in your subject area. It's easy. It's free. Explore the potential.

Create your own Forum



[Home](#)
Welcome / Dev News

[Library](#)

[Posts/Discussions](#)
Join Discussion

[Calendar](#)
Add Events

[Members](#)
Invite Colleagues

[All Forums](#)
Create / Learn More

#GL13ScienceForums > Members > Invite Colleagues

Members: Invite Colleagues

Email addresses or usernames:

DominicFarace@textrelease.com; joachim.schopfel@gmail.com;
conference@textrelease.com; coppocke@comcast.net; debbie.odell@tds.net;
vowell@osti.gov

Enter up to 50 email addresses or usernames. Separate multiple addresses by commas or new lines. Each person will receive an invitation message from you.

You can also import your contacts from GMail, Yahoo!, Lycos, AOL, Hotmail and many more.

Personal message:

Dear Dominic:

To finalize slides for GL13, I have created this BETA forum and invite you to join. Your participation here will be welcome as, for one, I have entered a reference to your [Grey Literature in Library and Information Studies](#) in the

Optional. Enter a message which will become part of the invitation email.

Calendar

November						
S	M	T	W	T	F	S
						1
2	3	4	5	6	7	8
9	10	11	12	13	14	15
16	17	18	19	20	21	22
23	24	25	26	27	28	29
30	31					

Content Updates

This group offers an [RSS feed](#). Or subscribe to these personalized, sitewide feeds:

This Forum: [RSS](#)

All My Unread: [RSS](#) or [Page View](#)



Home
Welcome / Dev News

Library
Build Repository

Posts/Discussions
Join Discussion

Calendar
Add Events

Members
Invite Colleagues

All Forums
Create / Learn More

#GL13ScienceForums > Library

Start Searching... All Forums ▼

Library

Search Library

Add to Library

You can upload documents or add references to publications that can be shared with the group, commented on, and discussed.

Already got references as DOIs or packaged up in BibTex or EndNote? No problem. You can import directly from those formats.

Document Properties:

Author
(dc.contributor)

Publisher
(dc.publisher)

ISBN-13
(dc.identifier)

Pre-filled per ISBN



- [Home](#)
Welcome / Dev News
- [Library](#)
Build Repository
- [Posts/Discussions](#)
Join Discussion
- [Calendar](#)
Add Events
- [Members](#)
Invite Colleagues
- [All Forums](#)
Create / Learn More

#GL13ScienceForums >

Start Searching... All Forums ▼

#GL13ScienceForums

Exploring options/benefits for tweeting #GL13ScienceForums at the GL13, The Grey Circuit: From Social Networking to Wealth Creation, <http://www.textrelease.com/gl13abstracts/openingsession.html>

Most Recently Added

Towards a Prague Definition of Grey Literature

→ **LIBRARY ENTRY**

The most common definition of grey literature, the so-called 'Luxembourg definition', was discussed and approved during the 3rd International Conference on Grey Literature in 1997.

10/26/11 10:04 PM
[READ MORE »](#)

GL13 Conference, Dec 5-6, 2011

→ **CALENDAR ENTRY**

12/04/11 07:00 pm
GL13 Conference, The Grey Circuit: From Social Networking to Wealth Creation

10/26/11 10:04 PM
[READ MORE »](#)

Tweets about Tweeting

→ **POST ENTRY**

RT @schopfel RT @Klortho : What happens when you tweet about a paper in an institutional repository, #openaccess <http://t.co/B8IUoZgR>
Melissa Terras' Blog <http://melissaterras.blogspot.com>

10/26/11 09:44 PM
[READ MORE »](#)

Calendar

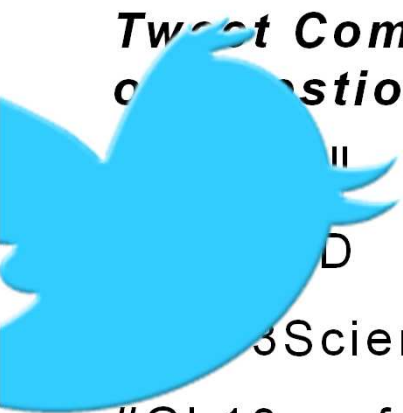
October						
S	M	T	W	T	F	S
						1
2	3	4	5	6	7	8
9	10	11	12	13	14	15
16	17	18	19	20	21	22
23	24	25	26	27	28	29
30	31					

Content Updates

This group offers an [RSS feed](#). Or subscribe to these personalized, sitewide feeds:

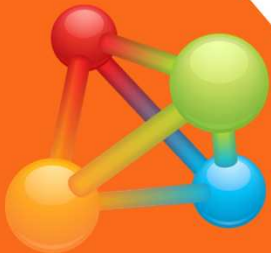
- This Forum: [RSS](#)
- All My Unread: [RSS](#) or [Page View](#)
- All My Forums: [RSS](#) or [Page View](#)

**Tweet Comments
Questions:**



ScienceForums
#GL13conf

Science-Forums.net
COMMUNITIES FOR SCIENCE COLLEAGUES



Lance Vowell
Program Manager
Contractor to DOE/OSTI
Information International
Associates (IIA)
(865) 576-2087
VowellL@osti.gov

Lynn Davis
Program Liaison, MLS
DOE Office of Scientific and
Technical Information (OSTI)



(865) 241-6435
DavisL@osti.gov