



# Usage assesment of an institutional repository : A case study

Hélène Prost (INIST-CNRS)

Isabelle Le Bescond (University of Lille 1)

Joachim Schöpfel (University of Lille 3)



GL 12 – December 6-7, 2010





# Background



- 2009 :
  - Study on development and usage of open archives in France
- 2010 :
  - Case study to measure usage
    - University of Lille1 (France) wants to know usages of its institutional repository
    - Study joins the interests of the community



GL 12 – December 6-7, 2010





# IRIS :



- Was formerly *Grisemine*, the first french institutional repository
- Contains :
  - The academic production of the university of Lille 1
    - 67% of grey literature
  - A legacy fund in history of sciences



GL 12 – December 6-7, 2010





# How to measure usage



- Measuring traces of navigation
  - Log files analysis
  - Software Urchin (Google)
  - Methodological framework of UCL-CIBER (Centre for Information Behaviour and the Evaluation of Research)

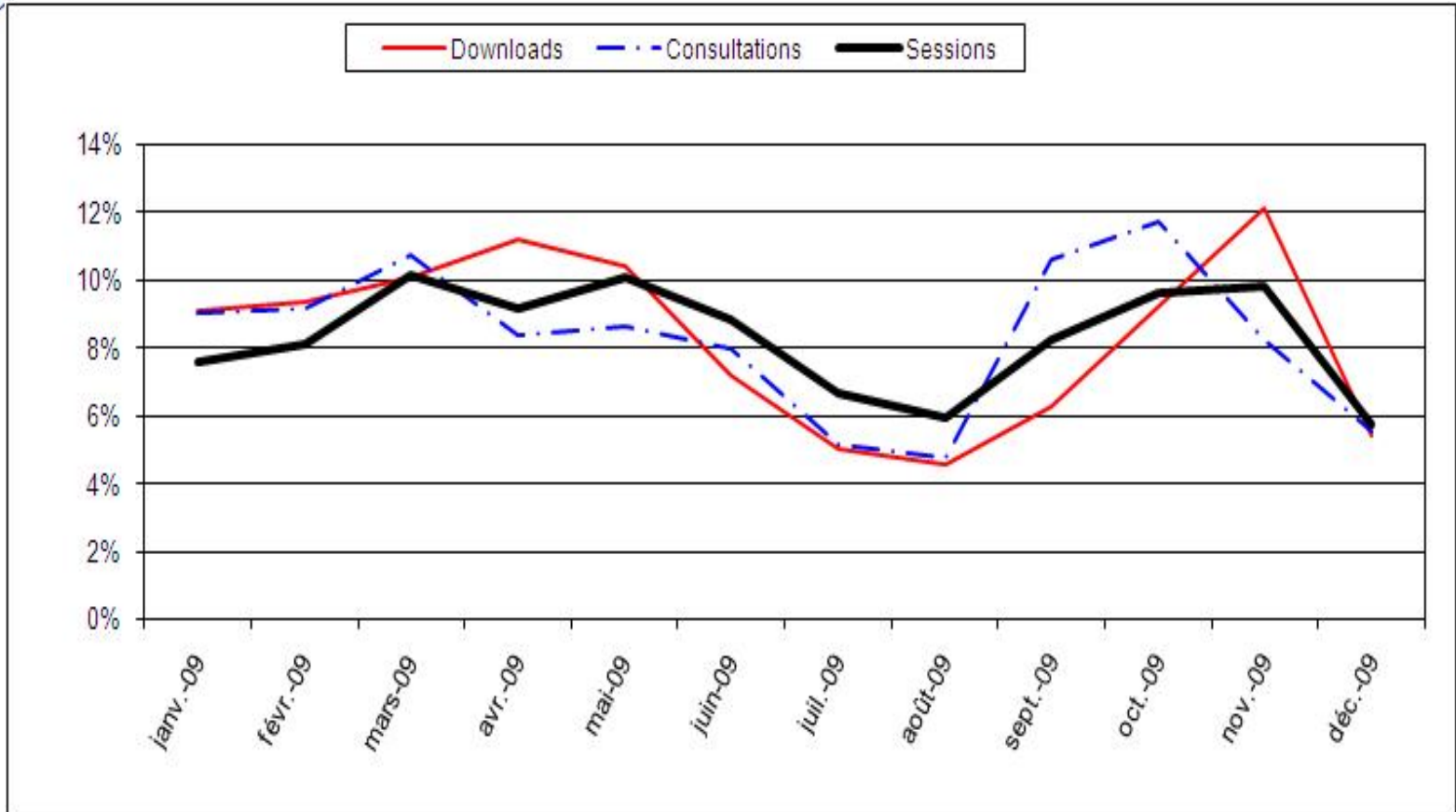


GL 12 – December 6-7, 2010





# IRIS results 2009 (1)

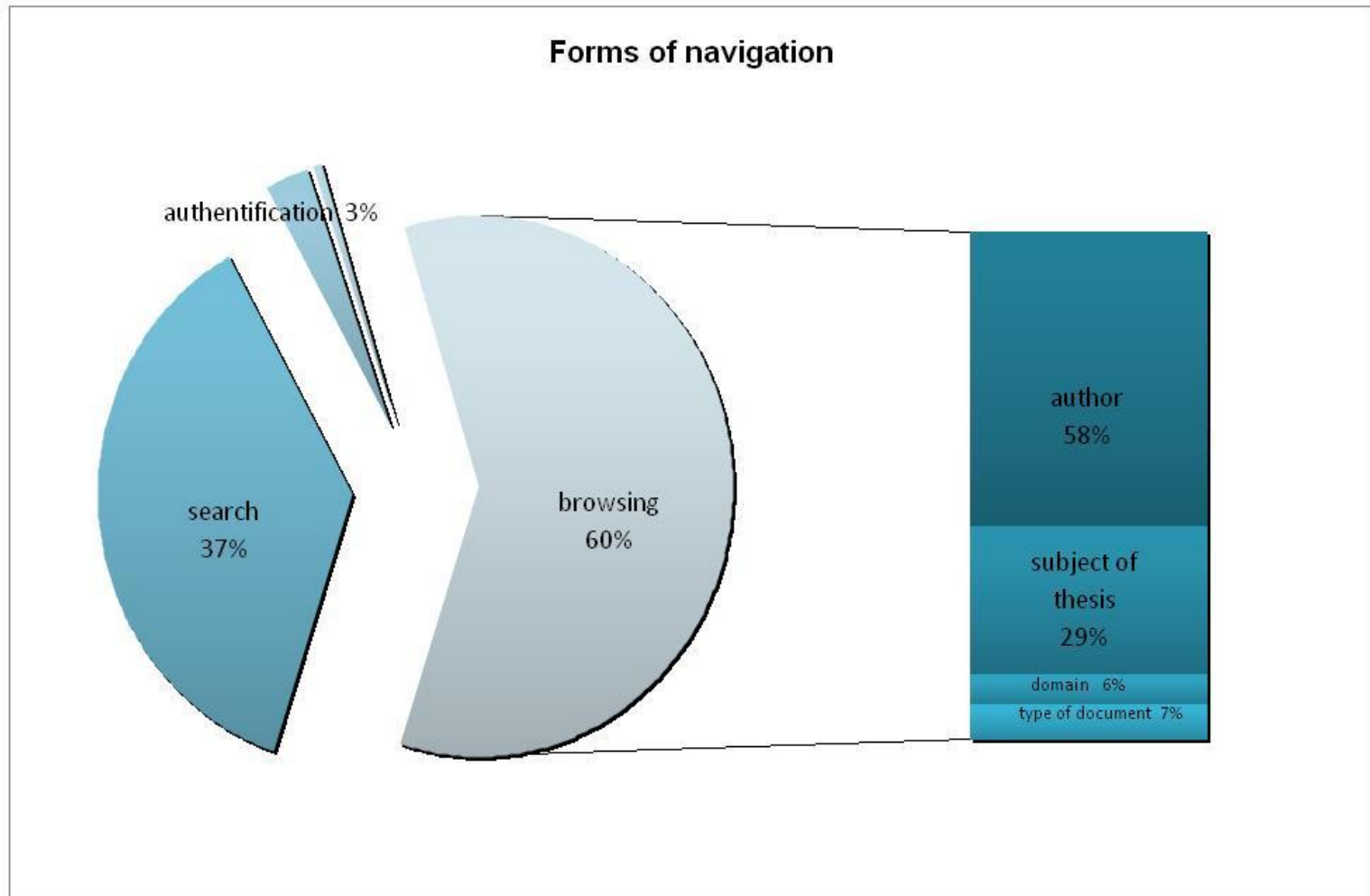


GL 12 – December 6-7, 2010

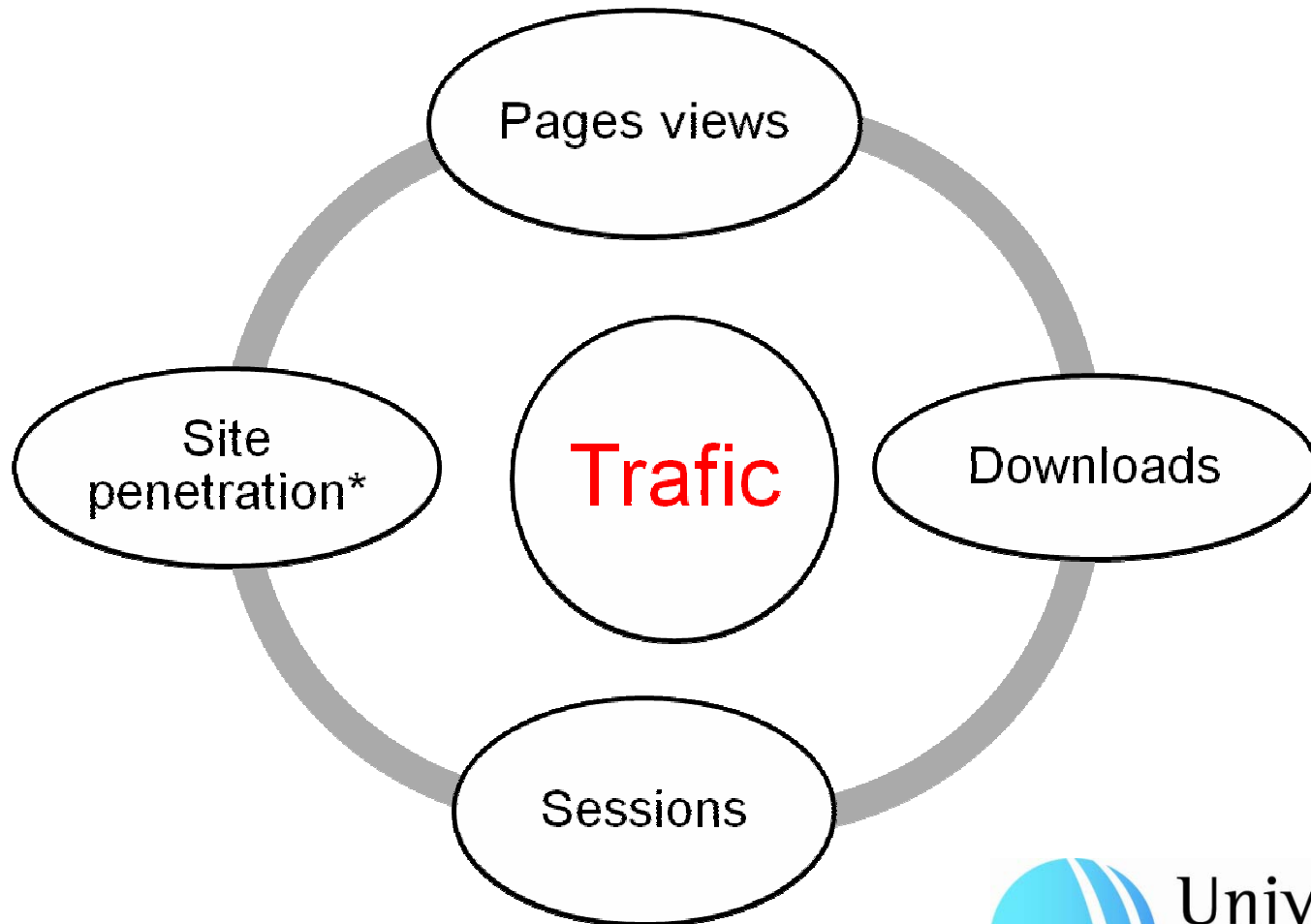


Université  
Lille1  
Sciences et Technologies

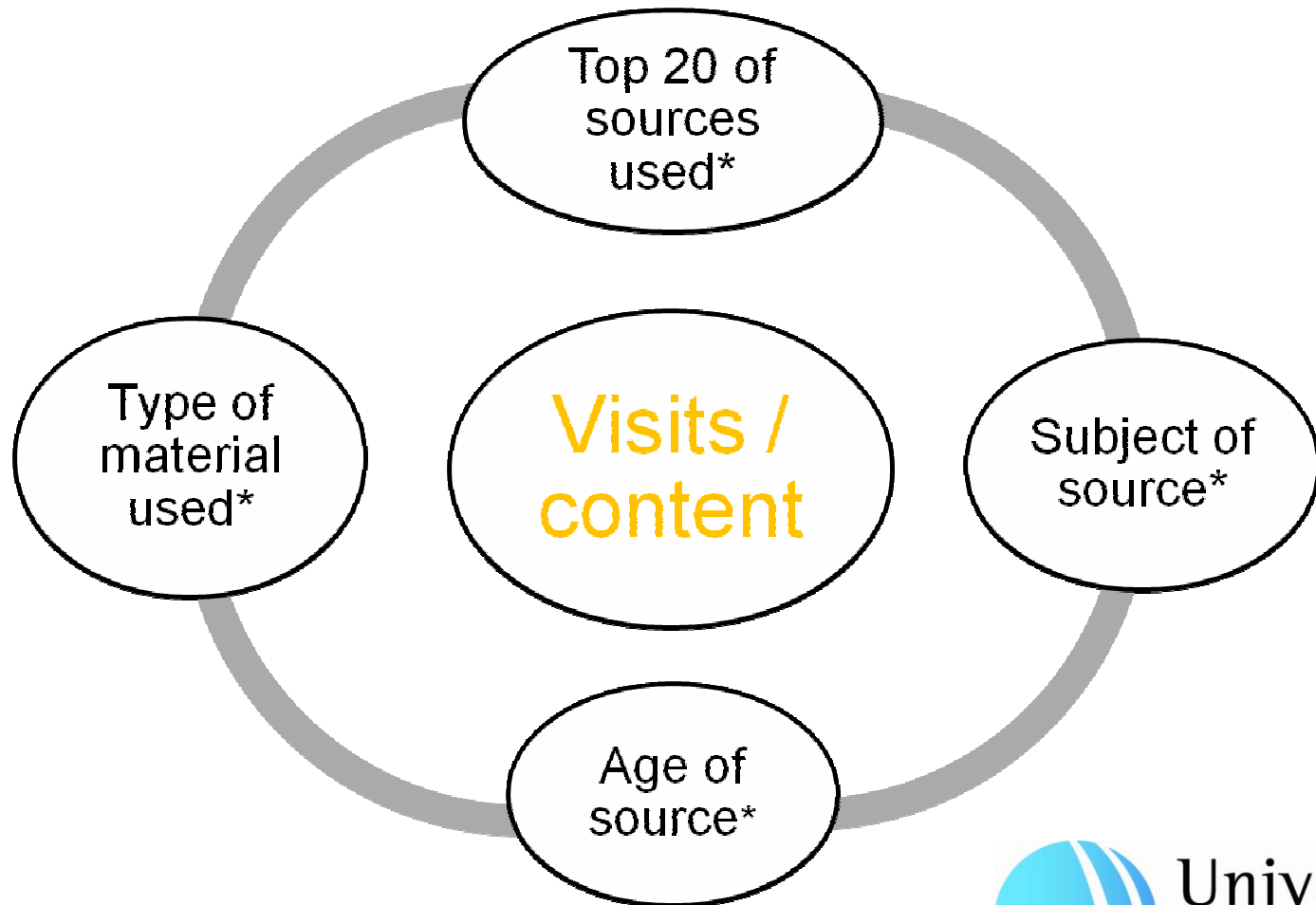
# IRIS results 2009 (2)



# Log files analysis (1)

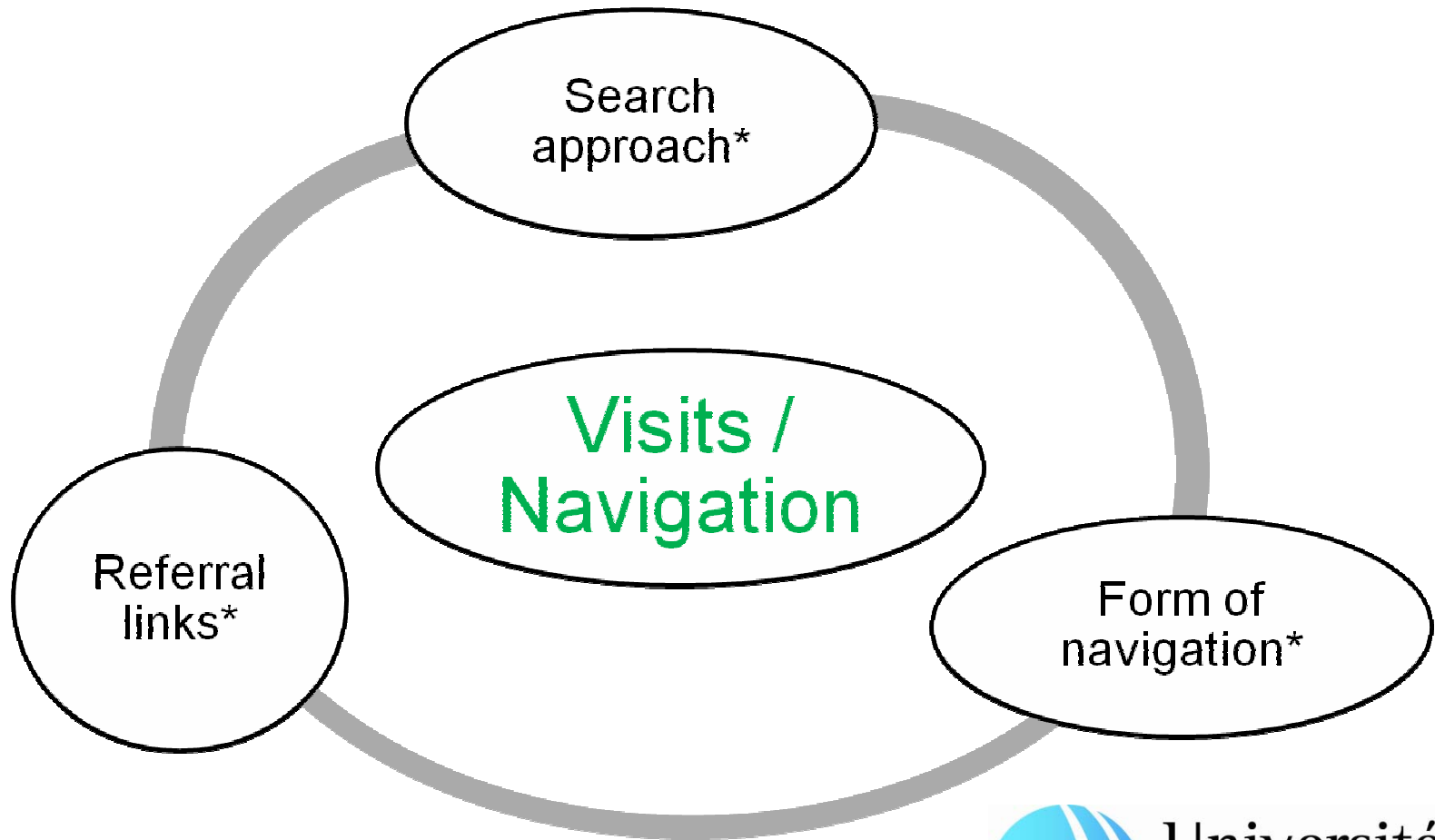


# Log files analysis (2)



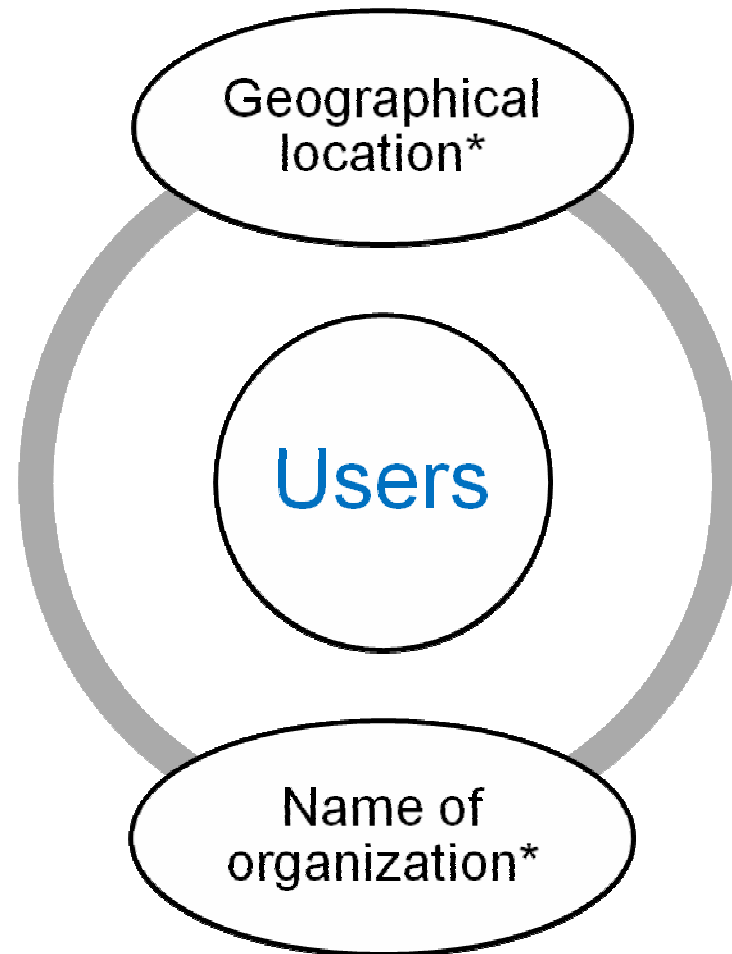


# Log files analysis (3)





# Log files analysis (4)



GL 12 – December 6-7, 2010





# Next steps



- Simplify and standardize the usage statistics
- Enrichment of the glossary
- IRIS : New services and functionalities
- Collaboration with
  - Japan: Chiba University
  - Germany: DINI network
  - United Kingdom: UCL-CIBER



GL 12 – December 6-7, 2010





# Thank you !



Hélène Prost

[helene.prost@inist.fr](mailto:helene.prost@inist.fr)

Isabelle Le Bescond

[isabelle.le-bescond@univ-lille1.fr](mailto:isabelle.le-bescond@univ-lille1.fr)

Joachim Schöpfel

[joachim.schopfel@univ-lille3.fr](mailto:joachim.schopfel@univ-lille3.fr)



GL 12 – December 6-7, 2010



Université  
Lille1  
Sciences et Technologies